

ROKAMAT
easy working



RANGE OF MACHINES

2017

SPECIAL SOLUTIONS FOR CONSTRUCTION



ROKAMAT provides special solutions for construction.
Innovative machine technology for:

- ▣ EIFS and ETICS
- ▣ Drywall construction
- ▣ Renovation
- ▣ Concrete and plaster finishing



made **in germany** since 1982

ROKAMAT
easy working

Product overview

ROKAMAT Wireless Line

DRAGONFLY Wireless Hot-Wire Cutter NEW! _____	4 – 5
Wireless Grinding System for EIFS and ETICS: FOX and Vacuum Cleaner _____	6 – 7
Wireless SPONGE FLOAT _____	8 – 9

Grinding Machines

CHAMELEON Universal Machine _____	10 – 13
HERON Long-neck Grinder NEW! _____	14 – 16
GECKO RAPID Turbo Grinder _____	20 – 22
GEX Renovation Grinder _____	24 – 26

Formwork Cleaner

HEDGEHOG Clean _____	28 – 29
----------------------	---------

Joint Millers

PIRANHA Cutter _____	30 – 31
PIRANHA Miller _____	32 – 33

Vacuum Cleaners

Rucksack Vacuum Cleaner _____	34
Special Vacuum Cleaner (dust class M) _____	35

Plaster Finishing Machines

DRY _____	36 – 37
WET _____	38 – 39
NAUTILO _____	40 – 41
Accessory Plaster Finishing Machines _____	42 – 43

Concrete Power Trowel

SKATE _____	44 – 45
-------------	---------

Concrete Vibrator _____	46 – 47
-------------------------	---------

ROKAMAT DRAGONFLY

Wireless Hot-Wire Cutter

NO. 52000

NEW



► Thermal cutting of polystyrene insulating boards

► Optimal for working on scaffolding

Advantages

- No cumbersome cable (batteries attached to the machine)
- Approx. 250 cuts without recharging
- Easy handling
- Robust design
- Repeating cuts quickly and precisely
- Different scales allow for accurate cuts



2 light weight Li-Ion batteries mounted on the machine

Accessories

Cutting wire	Unit	No.	Fig.
Cutting wire (30 m)	1	52050	1
Battery pack + Battery charger	Unit	No.	Fig.
Battery pack 5,2 Ah 18 V	1	08050	—
Battery charger standard	1	08060	—
Fast battery charger	1	08065	—
Premium package battery: Fast battery charger + battery pack 5,2 Ah 18 V	1	08066	—

· Batteries to be used with all machines of the Wireless Line.

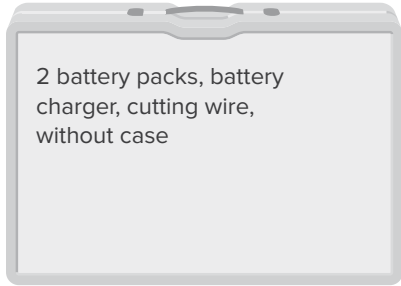


1

Technical Data

Voltage Li-Ion battery	18 V
Capacity Li-Ion battery	5,2 Ah
Weight	approx. 17 kg
Cutting length	120 cm
Cutting thickness	35 cm

Scope of supply



2 battery packs, battery charger, cutting wire, without case

ROKAMAT FOX

Wireless Grinder for
 EIFS and ETICS

NO. 24000



▶ Grinding and roughening EIFS
 and ETICS insulation boards

▶ Optimal for working on
 scaffolding

Advantages

- ▶ Pure freedom of movement - no cumbersome cable
- ▶ Grinding up to 80m² without recharging
- ▶ Smooth operation thanks to contra-rotating tool discs
- ▶ **Grinding System: in combination with the Wireless Rucksack Vacuum Cleaner (Fig. 4, see page 34)**



Accessories

Supporting plates	Unit	No.	Fig.
Supporting plates with velcro (Ø 200 mm)	2	24002	1
· For mounting sanding discs and metal abrasives discs			
Sanding discs	Unit	No.	Fig.
Emery grain 16 (for polystyrene)	4	20816	2
Emery grain 24	4	20824	2
Emery grain 40	6	20840	2
Further grains on request			
· Surface grinding of polystyrene insulating boards, rock wool or other thermal insulating systems (EIFS and ETICS) as well as taped board joints			
· Roughening up polystyrene surfaces for next application			
Grinding discs	Unit	No.	Fig.
Metal abrasive discs, fine (Ø 200 mm)	2	22400	3
· For uneven polystyrene insulation boards			
Battery pack + Battery charger	Unit	No.	Fig.
Battery pack 5,2 Ah 18 V	1	08050	–
Battery charger standard	1	08060	–
Fast battery charger	1	08065	–
Premium package battery: Fast battery charger + battery pack 5,2Ah 18 V	1	08066	–
· Batteries to be used with all machines of the Wireless Line			
Optional accessory	Unit	No.	Fig.
Shoulder strap	1	05100	5



Technical Data

Tool r.p.m.	400 (constant)
Voltage Li-Ion battery	18 V
Capacity Li-Ion battery	5,2 Ah
Weight	Tool approx. 2,2 kg

Scope of supply

2 battery packs, battery charger, supporting plates with Velcro Ø 200 mm and emery discs grain 16, in machine case
--

Video



ROKAMAT
WIRELESS
SPONGE FLOAT

NO. 35000

“WE SAVE 50-70 %
WORKING TIME.”
TIHAMER VENDEG,
PLASTERER



▶ **Machining plaster and
lime-cement render**

▶ **Sponging filler
compounds**

▶ **Smoothing
concrete elements**



Relaxed machining on large wall surfaces



230 r.p.m.



Easy handling

Advantages

- ▶ Pure freedom of movement - no cumbersome cable
- ▶ Powerful rechargeable battery
- ▶ 50 % time saving compared to manual work
- ▶ Even texture due to large operating surface (Ø 350 mm)
- ▶ Machining up to 60m² without recharging

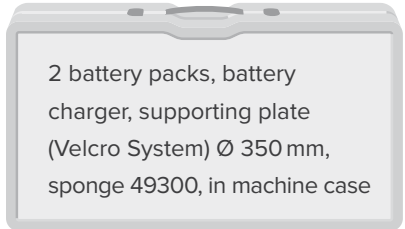
Accessories

Available accessories see on page 42 + 43, battery see page 5
Trowels for smoothing concrete elements see page 45

Technical Data

Tool r.p.m.	230 (constant)
Voltage Li-Ion battery	18 V
Capacity Li-Ion battery	5,2 Ah
Weight	approx. 4 kg

Scope of supply



Video



ROKAMAT CHAMELEON

Light weight Universal Machine

NO. 20000



▣ Grinding, smoothing, cleaning, polishing, stripping wallpaper – all with one machine



Grinding EIFS and ETICS boards



Removing old plasters



Stripping wallpaper

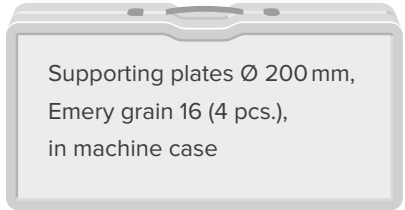
Advantages

- ▣ Light weight due to separation of tool and motor
- ▣ Smooth operation thanks to contra-rotating tool discs
- ▣ Large operating surface (2x Ø 200 mm)
- ▣ Continuous speed control to optimise each different application
- ▣ Dust-free working with the Rucksack Vacuum Cleaner (see page 34)

Technical Data

Tool r.p.m.	150 – 570
Power consumption	1.000 W
Weight	Tool approx. 2,4 kg Motor approx. 2,4 kg

Scope of supply



Video



Accessories CHAMELEON

	Unit	No.	Fig.
Cleaning			
Steel brushes, fine	2	21200	1
Steel brushes, medium	2	21300	1
Steel brushes, coarse	2	21400	1
Special steel brushes, medium	2	23000	1
Special steel brushes, coarse	2	23100	1
Nylon brushes, superfine	2	21505	2
Nylon brushes, fine	2	21500	2
Nylon brushes, coarse	2	21600	2
Steel / nylon brushes	2	22500	–

- Cleaning formwork units: Concrete residues on a pan or on steel frames can be easily removed with steel brushes. Once the surface skin is waxed with nylon brushes, it is ready for further use.
- Removing old, loose plaster, render and paint
- Cleaning exterior facades of moss and algae
- Cleaning and preparing plaster for new coverings

Cleaning and polishing

All pads to use with the supporting plates No. 20700	Unit	No.	Fig.
Cleaning pad grid 80, coarse	2	23500	3
Cleaning pad grid 120, medium	2	23400	3
Cleaning pad grid 180, fine	2	23900	3
Polishing pad, very fine	2	23300	3
Lambskin pad, superfine	2	23600	4

- Cleaning buildings and facades, Polishing “marble effect” or parquet

Scratching

	Unit	No.	Fig.
Scratching discs “longlife”	2	20100	5

- Nail plates with pointed pins for scratching sgraffito. Large working surface ensures both safe and flat working with the nailplates. They can also be used to remove glass fibre wallpaper coatings.

Removing old plasters

	Unit	No.	Fig.
Widia discs	2	21700	6

- For removing sanding old plasters and for roughening dry plaster. Adhesive residues of carpet glue and tiling adhesives can be milled off, as well as heavy fouling on industrial floors (area performance for tiling adhesive: about 20–30 m² per hour).

Smoothing

	Unit	No.	Fig.
Smoothing attachments	2	25200	7
to use with base plate	2	25000	–

- Smoothing plates for abrading render and plaster after setting

Flattening concrete

	Unit	No.	Fig.
Flattening plate	2	22700	8
Flattening plates with trowel blades	2	22600	9

- For hard trowelling (e. g. wet concrete inside silos)

Ø 200 mm



Removing wallpaper

	Unit	No.	Fig.
Premium package “Removing wallpaper” Perforating discs, Shaving plates, Guide rails, Sharpening board	Set	22250	–
Perforating discs	2	22200	1

- Perforating wallpaper, so that it can be thoroughly soaked and loosens easily

Shaving plates	2	22300	2
Sharpening board (for re-sharpening the blades of shaving plates)	1	22220	–

- For removing wallpaper, for cleaning shuttering or for other shaving work

Guide rails	2	22210	3
-------------	---	-------	---

- Please use in combination with perforating and shaving discs

Grinding

	Unit	No.	Fig.
Supporting plates with velcro	2	20700	4

- For mounting sanding discs, grinding grids, metal abrasive discs, cleaning and polishing pads

Sanding discs

	Unit	No.	Fig.
Emery grain 16 (for polystyrene)	4	20816	5
Emery grain 24	4	20824	5
Emery grain 40	6	20840	5
Emery grain 60 (for gypsum)	6	20860	5
Emery grain 80	6	20880	5
Emery grain 100	6	20810	5
Emery grain 120	6	20812	5

Range of application:

1. Surface grinding: Polystyrene insulating boards, rock wool or other thermal insulating systems (EIFS and ETICS), taped board joints, plaster background (1st layer of the render)
2. Roughening up polystyrene surfaces for next application
3. Cleaning shuttering pans (when concrete residues are hardened)

JÖST Superpads

	Unit	No.	Fig.		Unit	No.	Fig.
Grain 40	6	28040	6	Grain 120	6	28012	6
Grain 60	6	28060	6	Grain 180	6	28018	6
Grain 80	6	28080	6	Grain 220	6	28022	6

- Unique full-surface perforations and patented Velcro-type system allows full-surface dust extraction (no clogging), higher sanding capacity and shorter sanding time.

Grinding grids

	Unit	No.	Fig.		Unit	No.	Fig.
Grinding grit 80	4	27080	7	Grinding grit 180	6	27018	7
Grinding grit 100	6	27010	7	Grinding grit 220	6	27022	7
Grinding grit 120	6	27012	7				

- For plaster, filler, etc.

Aggressive grinding

	Unit	No.	Fig.
Metal abrasive discs, fine	2	22400	8
Metal abrasive discs, medium	2	23200	8
Metal abrasive discs, coarse	2	22900	8

- For grinding timber, brick, screed, carpet remains, fibreglass, gas concrete and many other materials

Optional accessory

	Unit	No.	Fig.
Shoulder strap	1	05100	9

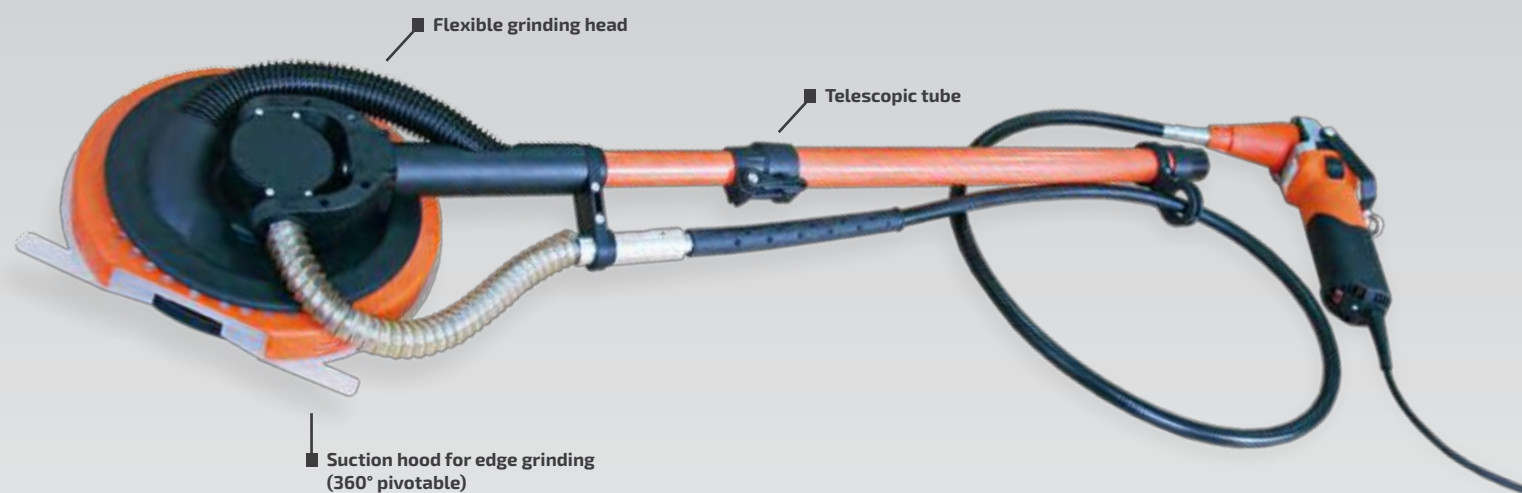


ROKAMAT HERON

The lightest Long-neck Grinder

NO. 60100

NEW



▣ Grinding plasterboard, wall board and concrete burrs

▣ Grinding and polishing walls, floors and ceilings



Grinding large surfaces very quickly



Edge grinding



Comfortable working due to light weight tool

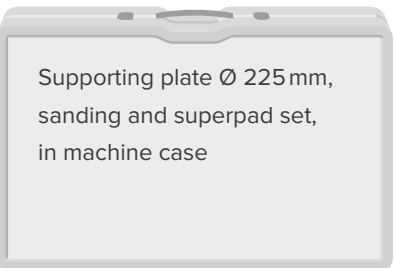
Advantages

- ▣ Light weight: tool approx. 2,4 kg
- ▣ High engine power (1.500 W)
- ▣ Smooth operating, without vibration
- ▣ Short and long-neck grinder in one (grinding up to 3 m height)
- ▣ Flexible and robust grinding head
- ▣ Grinding tight into the edges with special dust hood
- ▣ Compatible with the Rucksack Vacuum Cleaner (see page 34)

Technical Data

Tool r.p.m.	640 – 2.270
Power consumption	1.500 W
Weight	Tool approx. 2,4 kg
Length	105 – 155 cm

Scope of supply



Video



Accessories HERON

Supporting plate	Unit	No.	Fig.
Supporting plate with velcro Ø 225 mm	1	60150	1

- With foam rubber base
- For all accessory discs Ø 225 mm

Cleaning and polishing	Unit	No.	Fig.
Cleaning pad grain 80, coarse	6	62200	2
Cleaning pad grain 120, medium	6	62000	2
Cleaning pad grain 180, fine	6	62100	2
Polishing pad, very fine	2	62800	2
Lambskin pad, superfine	2	62900	3

- Cleaning and polishing (e.g. for polishing fair-faced concrete)

Grinding	Unit	No.	Fig.	Unit	No.	Fig.
Emery grain 40	6	61100	4	Emery grain 100	6	61400
Emery grain 60	6	61200	4	Emery grain 120	6	61500
Emery grain 80	6	61300	4	Emery grain 150	6	61600

- Sanding discs for professional painting and varnishing

JÖST Superpads	Unit	No.	Fig.	Unit	No.	Fig.
Grain 40	6	69840	5	Grain 120	6	69812
Grain 60	6	69860	5	Grain 180	6	69818
Grain 80	6	69880	5	Grain 220	6	69822

- Unique full-surface perforations and patented Velcro-type system allows:
Full-surface dust extraction (no clogging), higher sanding capacity and shorter sanding time

Grinding grids	Unit	No.	Fig.
Grain 80	4	69780	6
Grain 100	6	69710	6
Grain 120	6	69712	6
Grain 180	6	69718	6
Grain 220	6	69722	6

- For plaster, filler etc.

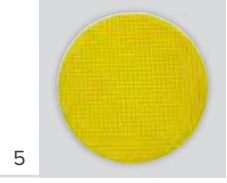
Aggressive grinding	Unit	No.	Fig.
Metal abrasive disc, fine	1	60500	7
Metal abrasive disc, medium	1	60600	7
Metal abrasive disc, coarse	1	60700	7

- For grinding timber, brick, screed, carpet remains, fibreglass, gas concrete and many other materials

Diamond grinding disc	Unit	No.	Fig.
Diamond grinding disc "light"	1	60300	8

- For grinding concrete burrs, floor screeds etc.

Optional accessory	Unit	No.	Fig.
Shoulder strap	1	05100	9



For 35 years ROKAMAT
has been inventing special machinery for
painters and plasterers - always striving
to make working easier and
profitability higher.

“There is nothing comparable
to buy anywhere.
With ROKAMAT, everything fits!”

Michel Legier, shopfitting



HERON Grinding plaster

ROKAMAT drive technology

Separated from the tool, the motor is comfortably worn on a belt. This sophisticated concept reduces the weight of the tool and allows for long periods of working without tiring. The machines are better balanced and the motor is protected from getting soiled.

ROKAMAT hallmark:

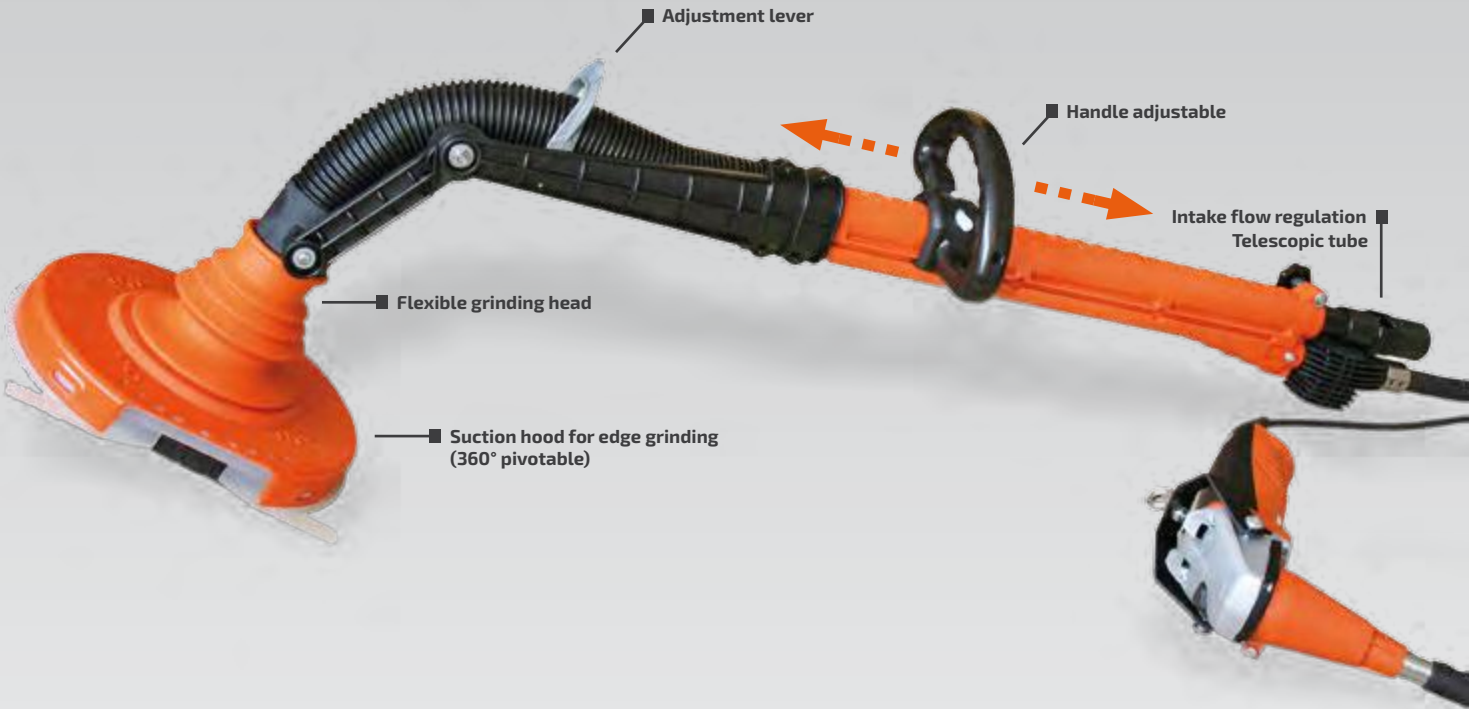
Power transmission via flexible drive shaft.

"We've grinded thousands of square meters of the SKY Towers in Bukarest with our ROKAMAT machines. We do all our grinding work with ROKAMAT."

Ioan Pop, SC Ildibau, Romania

ROKAMAT GECKO RAPID Turbo Grinder

NO. 82000



▶ **Power grinding (floor screeds, concrete burrs etc.)**

▶ **Sanding (e.g. drywall)**



Grinding screeds



Agile highspeed
surface sander



Edge grinding

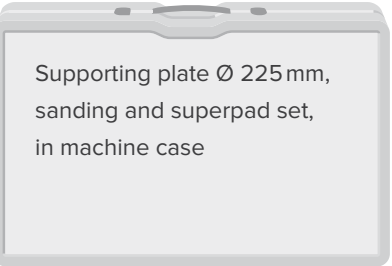
Advantages

- ▶ Double removal rate compared to common sanders (up to 3.050 r.p.m.)
- ▶ Light weight (tool / drive separation)
- ▶ Short and long-neck grinder in one
- ▶ Powerful grinding action with minimum effort (due to vacuum exhaust)
- ▶ Special grinding head: slewable, angle adjustable, designed for edge grinding
- ▶ Easy-slide ring for perfectly smooth run
- ▶ Designed for dust suction (vacuum cleaner see page 35)

Technial Data

Tool r.p.m.	860 – 3.050
Power consumption	1.500 W
Weight	Tool approx. 3,7 kg
Length	110 cm – 160 cm

Scope of supply



Video



Accessories GECKO RAPID

Special supporting plate	Unit	No.	Fig.
Special supporting plate with velcro Ø 225 mm	1	81205	1

- With foam rubber base
- For all accessory discs Ø 225 mm

Cleaning and polishing	Unit	No.	Fig.
Cleaning pad grain 80, coarse	6	62200	2
Cleaning pad grain 120, medium	6	62000	2
Cleaning pad grain 180, fine	6	62100	2
Polishing pad, very fine	2	62800	2
Lambskin pad, superfine	2	62900	3

- Cleaning and polishing fair-faced concrete

Sanding discs	Unit	No.	Fig.	Unit	No.	Fig.
Grain 40	6	61100	4	Grain 100	6	61400
Grain 60	6	61200	4	Grain 120	6	61500
Grain 80	6	61300	4	Grain 150	6	61600

- Sanding discs for professional painting and varnishing and for universal use

JÖST Superpads	Unit	No.	Fig.	Unit	No.	Fig.
Grain 40	6	69840	5	Grain 120	6	69812
Grain 60	6	69860	5	Grain 180	6	69818
Grain 80	6	69880	5	Grain 220	6	69822

- Unique full-surface perforations and patented Velcro-type system allows:
Full-surface dust extraction (no clogging), higher sanding capacity and shorter sanding time

Grinding grids	Unit	No.	Fig.
Grain 80	4	69780	6
Grain 100	6	69710	6
Grain 120	6	69712	6
Grain 180	6	69718	6
Grain 220	6	69722	6

- For plaster, filler etc.

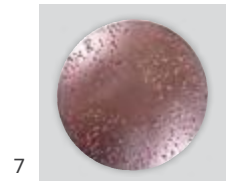
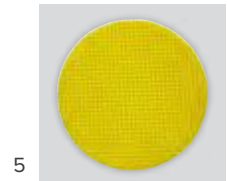
Aggressive grinding	Unit	No.	Fig.
Metal abrasive disc, fine	1	60500	7
Metal abrasive disc, medium	1	60600	7
Metal abrasive disc, coarse	1	60700	7

- For grinding timber, brick, screed, carpet remains, fibreglass, gas concrete and many other materials

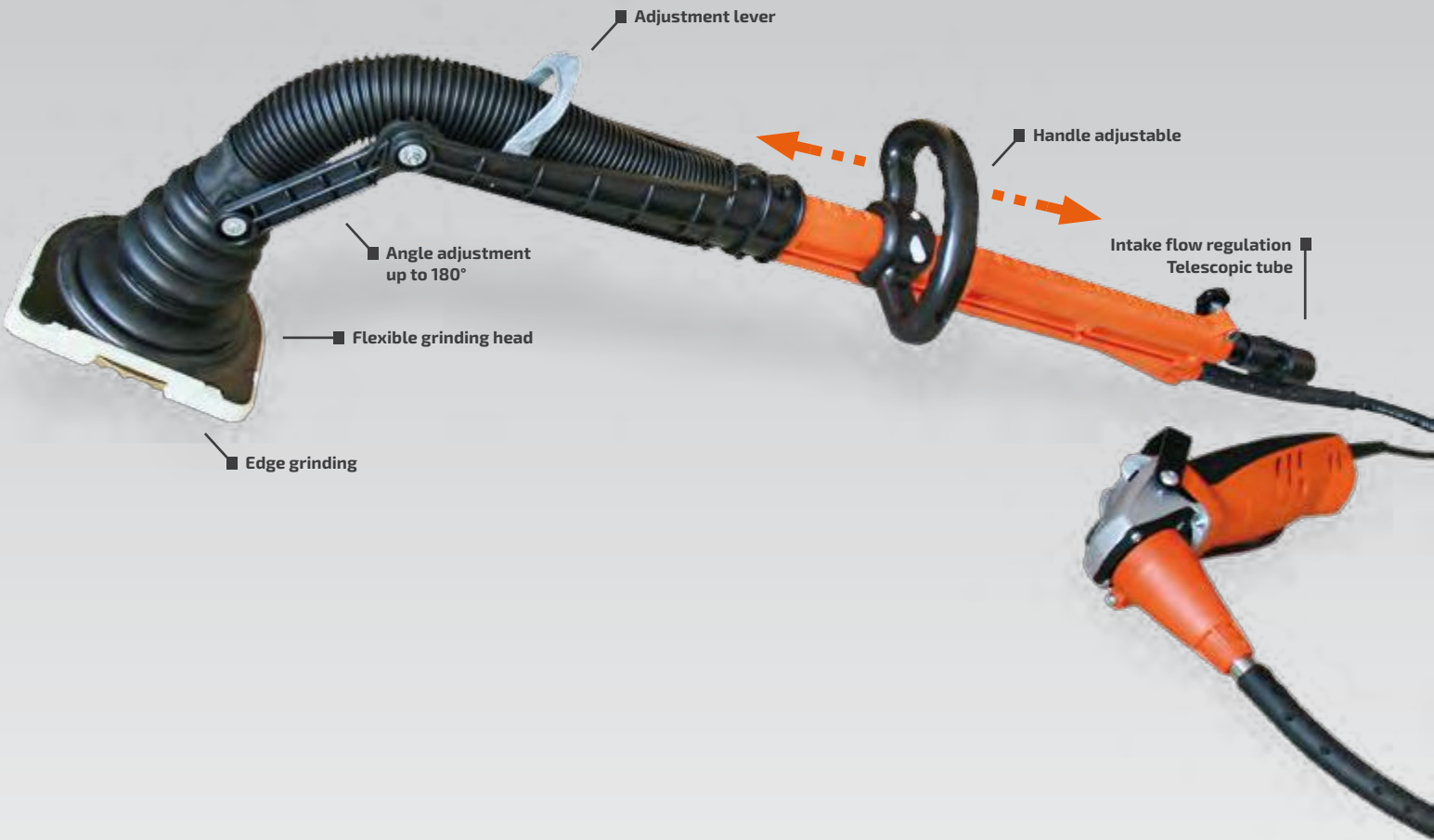
Diamond grinding disc	Unit	No.	Fig.
Diamond grinding disc "light"	1	60300	8

- For grinding concrete burrs, floor screeds etc.

Optional accessory	Unit	No.	Fig.
Shoulder strap	1	05100	9



ROKAMAT
GEX
Renovation Grinder
NO. 85000



► Agile concrete and renovation grinder for floors, walls and ceilings

► Parquet and Timber Grinding



Removing old plaster and paints



Grinding bitumen coating with PCD grinding disc



Edge grinding

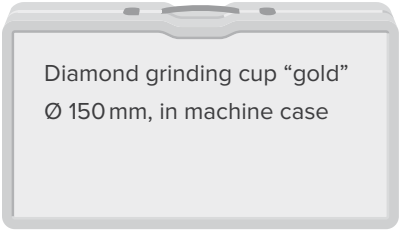
Advantages

- Special grinding head (sleuable, angle adjustable, designed for edge grinding)
- High engine power (1.500 W)
- Short-and long-neck grinder in one (grinding up to 3 m height)
- Powerful grinding action with minimum effort
- Designed for dust suction (vacuum cleaner see page 35)

Technical Data

Tool r.p.m.	2.580 – 9.140
Power consumption	1.500 W
Weight	Tool approx. 3,1kg
Length	110 – 160 cm

Scope of supply



Video



Accessories GEX

Ø 150 mm			
Diamond grinding cup	Unit	No.	Fig.
Diamond grinding cup gold - grain 40/50 (hard)	1	85600	1
· For abrasives material, fresh concrete, painting and others			
Diamond grinding cup blue - grain 40/50 (medium)	1	85500	2
· For concrete, screed, natural stone and others			
Diamond grinding cup yellow - grain 40/50 (soft)	1	85700	3
· For hard concrete, granite, stone, screeds and others			

PCD grinding disc	Unit	No.	Fig.
PCD grinding disc	1	85200	4
· With polycrystalline diamond coat for removing bitumen coating, epoxy resin, urethan and latex paint, old plaster and others			

Diamond grinding disc	Unit	No.	Fig.
Diamond grinding disc “light”	1	85400	5
· For light grinding work (e. g. concrete burrs, floor screeds etc.) and for finishing concrete			

Hard metal rasping discs	Unit	No.	Fig.
Rasping disc for edge grinding	1	85300	6
Rasping disc for surface grinding	1	85305	6
· For removing adhesive residues and old render			

Terrazzo polishing set	Unit	No.	Fig.
Terrazzo polishing set	Set	85800	7
· (Terrazzo diamond polishing discs K50, 100, 200, 400, 800, 1500, 3000)			

Accessories for parquet grinding

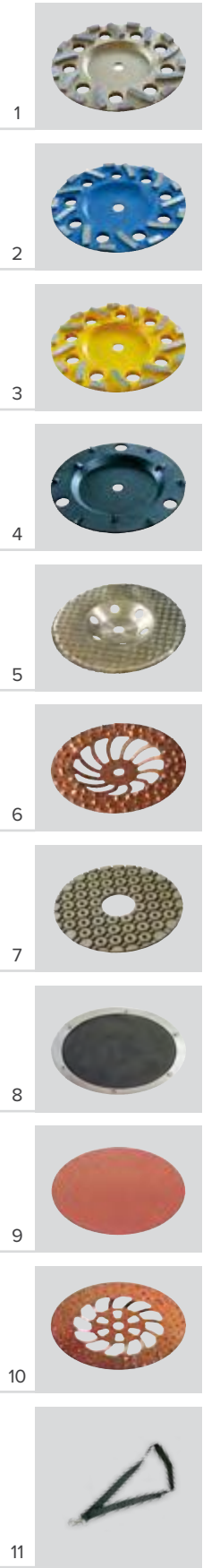
Ø 150 mm			
Supporting plate	Unit	No.	Fig.
Special supporting plate with velcro	1	84100	8
· For mounting sanding discs			

Sanding discs	Unit	No.	Fig.
Grain 60	6	84160	9
Grain 80	6	84180	9
Grain 100	6	84110	9
Grain 120	6	84112	9
Grain 150	6	84115	9

Diamond grinding disc	Unit	No.	Fig.
Diamond grinding disc “light”	1	85400	5
· For renovating varnished grounds			

Aggressive grinding	Unit	No.	Fig.
Hard metal rasping disc	1	84200	10
· For aggressive grinding of timber			

Optional accessory	Unit	No.	Fig.
Shoulder strap	1	05100	11



ROKAMAT GEX

Grinding effortlessly and efficiently.

No need to apply pressure.

Ergonomic handling.

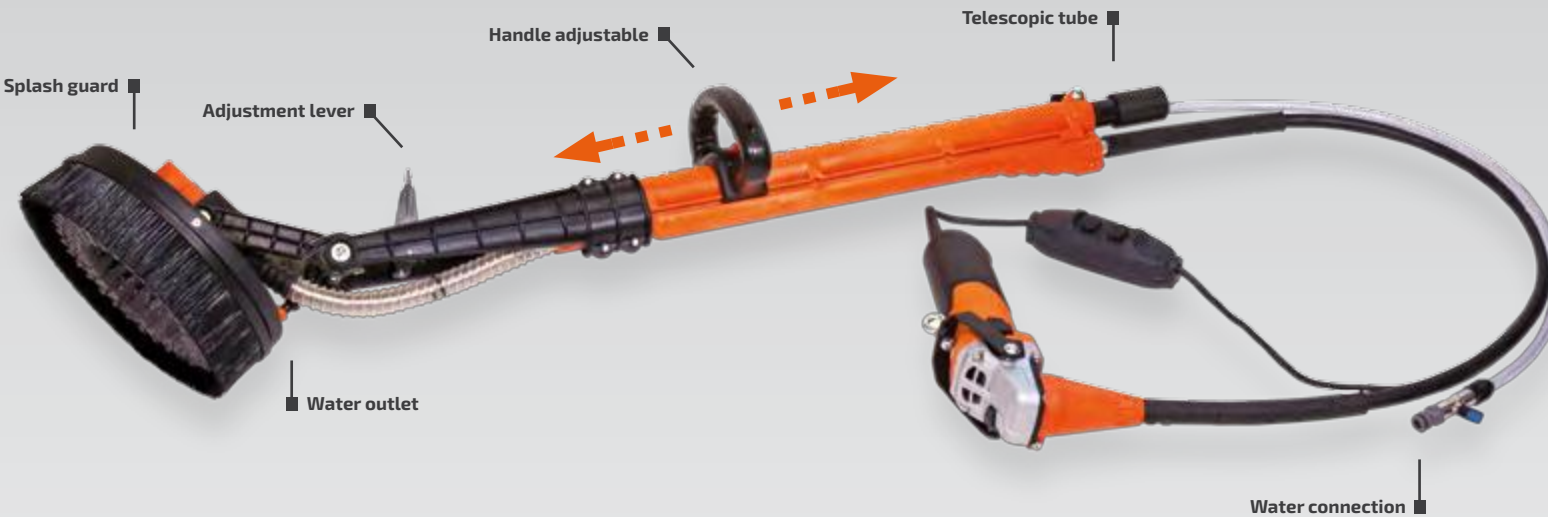
Working for long periods of time without tiring.

No worrying about reaching the ceiling
or grinding the edges.

“It works so smoothly, you don't
want to stop anymore...”
Eva Krieg, master carpenter, about the Parquet Grinder GEX P

ROKAMAT
HEDGEHOG Clean
 Formwork Cleaner

NO. 69600



▶ Removes easily concrete residues on formwork elements

▶ Shuttering segments can be cleaned in upright position

Advantages

- ▶ Light weight (tool 3,4 kg)
- ▶ High engine power (1.000 W)
- ▶ With water injection (also available without water connection - No. 69000)
- ▶ Tool / drive separation - improves weight distribution and reduces dirt build-up in the motor
- ▶ Telescopic handle



Accessories

			Ø 200 mm
Cleaning brushes	Unit	No.	Fig.
Steel brush, fine	1	69101	1
Steel brush, medium	1	69102	1
Steel brush, coarse	1	69103	1
Special steel brush, medium	1	69107	1
Special steel brush, coarse	1	69108	1
Nylon brush, superfine	1	69117	2
Nylon brush, fine	1	69104	2
Nylon brush, coarse	1	69105	2
Steel / nylon brush	1	69106	—
Supporting plate	Unit	No.	Fig.
Supporting plate with velcro	1	69110	3
Cleaning pads	Unit	No.	Fig.
Cleaning pad grain 80, coarse	1	69111	4
Cleaning pad grain 120, medium	1	69112	4
Cleaning pad grain 180, fine	1	69113	4
Diamond disc	Unit	No.	Fig.
Diamond disc "light"	1	69109	—
Optional accessory	Unit	No.	Fig.
Shoulder strap	1	05100	5



Technical Data

Tool r.p.m.	480 – 1.670
Power consumption	1.000 W
Weight	Tool approx. 3,4 kg
Length	105 cm – 155 cm

Scope of supply

Steel brush medium, steel-nylon brush, nylon brush coarse, supporting plate, cleaning pads coarse, medium, fine Ø 200 mm, splash guard, in machine case

Video



ROKAMAT PIRANHA Cutter

Joint and Slot Cutter

NO. 90200



► **Special tool for hard joints and cable slots (Tuck pointing)**

► **Ideal for brick facades or ceramic tiles**

Advantages

- Robust aluminium housing
- Motor separated from cutting device > longer motor life
- Fatigue-free operation due to light weight tool
- Almost dust-free renovation of joints (Special Vacuum Cleaner - see below)



Accessories

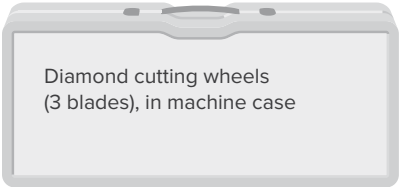
PIRANHA Miller (tool attachment)	Unit	No.	Fig.
Highspeed Miller for abrasive joints	1	90090	1
· Alternatively available as complete machine with flexible drive shaft and motor: No. 90000 · Accessories see page 33			
Diamond cutting wheels	Unit	No.	Fig.
Diamond cutting wheel set Ø 115 mm	3	90120	2
Vacuum Cleaner for PIRANHA Cutter	Unit	No.	Fig.
ISP iPulse (Starmix) Special Vacuum Cleaner with 35l container and 5 m antistatic suction hose	1	13600	3
· For harmful dust (dust class M)			
Optional accessory	Unit	No.	Fig.
Shoulder strap	1	05100	4



Technical Data

Tool r.p.m.	2.800 – 11.000
Power consumption	1.500 W
Weight	Tool approx. 2,0 kg Motor 2,6 kg

Scope of supply



Video



ROKAMAT PIRANHA Miller

Highspeed Miller for short joints

NO. 90000



Special tool for abrasive and short joints

Advantages

- Low-vibration
- Robust aluminium housing
- Motor separated from milling device > longer motor life
- Ideal also for all kind of short joints
- Almost dust-free renovation of joints (Special Vacuum Cleaner - see below)



Accessories

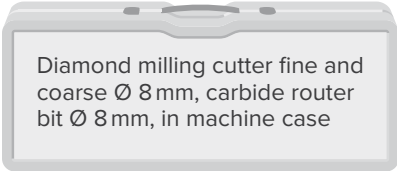
PIRANHA Cutter (tool attachment)	Unit	No.	Fig.
Joint and slot cutter	1	90290	1
· For hard joints on brick facades or ceramic tiles and cable slots on concrete, brick etc. · Alternatively available as complete machine with flexible drive shaft and motor: No. 90200			
Diamond milling cutters	Unit	No.	Fig.
Diamond milling cutter fine Ø 6 mm	1	90130	2
Diamond milling cutter fine Ø 8 mm	1	90131	2
Diamond milling cutter fine Ø 10 mm	1	90132	2
· For short hard joints			
Diamond milling cutter coarse Ø 6 mm	1	90140	3
Diamond milling cutter coarse Ø 8 mm	1	90141	3
Diamond milling cutter coarse Ø 10 mm	1	90142	3
· For long and short abrasive joints (mortar)			
Carbide router bits	Unit	No.	Fig.
Carbide router bit Ø 8 mm	1	90143	4
Carbide router bit Ø 10 mm	1	90144	4
· For soft joints			
Vacuum Cleaner für PIRANHA	Unit	No.	Fig.
ISP iPulse (Starmix) Special Vacuum Cleaner with 35 l container and 5 m antistatic suction hose	1	13600	—
· For harmful dust (dust class M)			
Optional accessory	Unit	No.	Fig.
Shoulder strap	1	05100	5



Technical Data

Tool r.p.m.	7.000 – 27.500
Power consumption	1.500 W
Weight	Tool approx. 2,4 kg Motor 2,6 kg

Scope of supply



Video



Rucksack Vacuum Cleaner

NO. 10000 (Electric Version)
NO. 12000 (Wireless Version)



Rucksack Vacuum Cleaner in combination with CHAMELEON

▢ Dust-free working on scaffolding

- ▢ Freedom of movement
- ▢ Light weight
- ▢ Large filter bags, capacity 15 l
- ▢ Also available: Wireless version for EIFS and ETICS

Accessories

Paper filter bags	Unit	No.
15 l capacity	10	10001
· For fine dust e. g. plaster, mineral wool dust and house dust		
Fabric filter bag for EIFS and ETICS	Unit	No.
15 l capacity	1	10002
· Only for polystyrene dust. With zip fastener - to be emptied (reusable)		
Lamellar filter	Unit	No.
Additional filter as power protection	1	10003
Accessory set	Unit	No.
Turbo nozzle, suction nozzle, floor upholstery nozzle, upholstery nozzle, joint nozzle, suction brush, radiator brush, suction hose, 2 tubes, adapter	Set	10004
· Also suited for private use		

Scope of supply

No. 10000
5 pcs. paper filter bags, without case
No. 12000
2 battery packs, battery charger, paper filter bag, fabric filter bag (reusable), without case

Video




Technical Data

	Electric Version	Wireless Version		
Power consumption	1.100 W	500 W	Dimensions L×W×H	20×43×63 cm
Max. air flow	60 l/s	31 l/s	Container	15 l
Max. vacuum	190 mbar	32 mbar		
Weight	6,5 kg	8,9 kg		

ISP iPulse

NO. 13600



Combinable with all ROKAMAT grinding machines

▢ Special Vacuum Cleaner for harmful dust (dust class M)

- ▢ Permanent filter cleaning without interrupting intake flow
- ▢ Antistatic design (antistatic suction hose)
- ▢ Significantly reduced system costs due to longer filter life, saves time and costs

Accessories

Plastic bag	Unit	No.
for 35 l container	5	13008
· For harmful dust (dust class M)		
Nonwoven fabric filter bag	Unit	No.
for 35 l container	5	13009
· For non-mineral dust (e. g. house dust)		
Accessory set	Unit	No.
Tube handle with supplementary air slide, 2 x suction tube, crevice nozzle (22 cm long), dust nozzle 37 with hard floor insert	Set	13010
· Also suited for private use		
Adapter	Unit	No.
Stepped adapter for Ø mm: 25,5 – 26,5 30,5 – 32,5 36,0 – 38,0	Set	13015

Scope of supply

Antistatic suction hose (5 m), 3 pcs. plastic bag, connecting sleeve (stepped), without case
--

Technical Data

Power consumption	1.600 W	Container	gross 35 l	Dimensions L×W×H	53×40×55 cm
Max. air flow	64 l/s		dust 25 l	Weight	15,7 kg
Max. vacuum	259 mbar		water 22 l	Dust class	M

ROKAMAT
DRY
Plaster Finishing Machine

NO. 30000

ALSO AVAILABLE:
WIRELESS VERSION
SEE PAGE 8



▢ Machining plaster, lime-cement render and clay plaster

▢ Sponging filler compounds

▢ Smoothing concrete elements

▢ Gypsum multi finish



New engine technology: Lower rotation speed possible
→ for a perfect surface structure



Smoothing up to the edges



Relaxed machining due to low machine weight

Advantages

- ▢ Light weight
- ▢ Uniform structure due to large headed work surface
- ▢ Cost effective (saving approx. 50 % of time)
- ▢ Continuous speed control for optimal adjusting to different types of plaster
- ▢ Tool / drive separation > improves weight distribution and reduces soiling

Accessories

Available accessories see page 42 + 43
Trowels for smoothing concrete elements see page 45

Technical Data

Tool r.p.m.	75 – 340
Power consumption	1.000 W
Weight	Tool approx. 2,4 kg Motor approx. 2,4 kg

Scope of supply



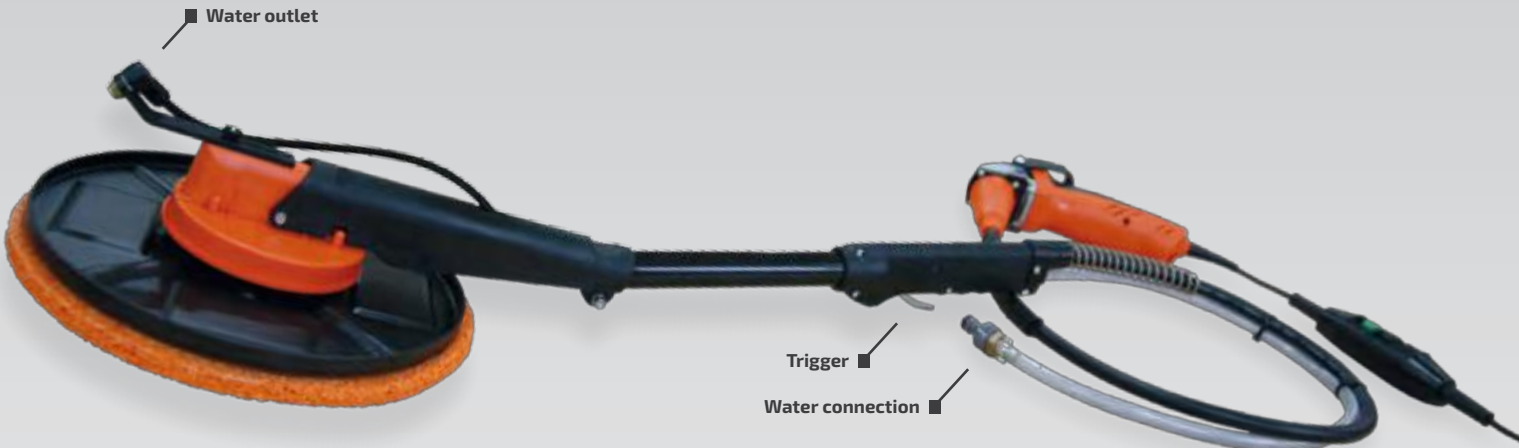
Video



ROKAMAT WET

Plaster Finishing Machine with water injection

NO. 40000



▶ **Machining plaster, lime-cement render and clay plaster**

▶ **Sponging filler compounds**

▶ **Gypsum multi finish**



Water regulation



New engine technology: Lower rotation speed possible
→ for a perfect surface structure

Advantages

- ▶ Light weight
- ▶ With water injection for generating an optimal filler slurry
- ▶ Cost effective (saving approx. 70 % of time)
- ▶ Continuous speed control for optimal adjusting to different types of plaster
- ▶ Tool / drive separation > improves weight distribution and reduces soiling

Accessories

Available accessories see page 42 + 43

Technical Data

Tool r.p.m.	75 – 340
Power consumption	1.000 W
Weight	Tool approx. 2,8 kg Motor approx. 2,4 kg

Scope of supply



Video



ROKAMAT NAUTILO

Plaster Finishing Machine with backpack tank

NO. 70000

FOR PERFECT
RENDER SURFACES



▶ Machining plaster, lime-cement render and clay plaster

▶ Sponging filler compounds

▶ Gypsum multi finish



New engine technology: Lower rotation speed possible
→ for a perfect surface structure



No extra water
supply needed



Easy working
on scaffolding

Advantages

- ▶ Integrated backpack water tank (6l)
- ▶ About 70 % time saving compared to manual work
- ▶ Adjustable water injection
- ▶ Light weight tool



Accessories

Available accessories see on page 43

Technical Data

Tool r.p.m.	75 – 340
Power consumption	600 W
Weight	Tool approx. 2,4 kg
Water tank	6l

Scope of supply



Video



Accessories Plaster
Finishing Machines

Adhesive System Ø 250 mm

Sponge discs	Unit	No.	Fig.
Sponge disc, coarse	1	33000	1
Spare sponge, coarse	1	33100	1
Sponge disc, fine	1	33400	1
Spare sponge, fine	1	33500	1
· For sponging plaster and lime-cement render, for generating a fine surface structure or for sponging filler compounds and clay plaster			
Sponge disc, superfine	1	33800	2
Spare sponge, superfine	1	33900	2
· For generating a fine surface structure			
Felt disc	Unit	No.	Fig.
Felt disc	1	33200	3
Spare felt disc	1	33300	3
· Rubbing interior / exterior lime-cement render surfaces			
Cellular rubber disc	Unit	No.	Fig.
Cellular rubber disc	1	33600	4
Spare cellular rubber disc	1	33700	4
· Levelling render surfaces with cellular rubber covering			
Optional accessory DRY/WET	Unit	No.	Fig.
Shoulder strap	1	05100	5



Accessories for:
SPONGE FLOAT (p. 8)
DRY (p. 36)
WET (p. 38)

Accessories Plaster
Finishing Machines

Velcro System Ø 350 mm

Base plate	Unit	No.	Fig.
for all accessory discs Ø 350 mm (No. 48100 - 49900)	1	48000	1
Rubbing plates	Unit	No.	Fig.
Rubbing plate with velcro, perforated	1	48100	2
Rubbing plate with velcro, smooth	1	48200	2
· For smoothing mortar			
Sponge discs	Unit	No.	Fig.
Sponge with velcro, coarse	1	49300	3
Sponge with velcro, fine	1	49400	4
Sponge on plastic backing with velcro, coarse*	1	48300	3
Sponge on plastic backing with velcro, fine*	1	48400	4
· For sponging plaster and lime-cement render, for generating a fine surface structure or for sponging filler compounds and clay plaster			
Sponge with Velcro, superfine	1	49500	5
Spone on plastic backing with velcro, superfine*	1	48500	5
· For generating a fine surface structure			
*Sponges on plastic backing can be worked off completely			
Sponge with velcro, blue	1	49800	–
Sponge with velcro, brown	1	49900	6
NEW! STRUCTURA Hydro sponge ring For a perfect surface structure	1	48800	7
· For fine plastering (very fine grain)			
Felt disc	Unit	No.	Fig.
Felt disc with velcro	1	49600	8
· Rubbing interior / exterior lime-cement render surfaces			
Trowel	Unit	No.	Fig.
NEW! Patented Trowel Ø 450 mm	1	34300	9
· Finishing wall renders of all types			
Premium package “Gypsum multi finish”	Unit	No.	Fig.
Sponge on plastic board, trowel, supporting plate and polishing pad (without picture)	Set	34305	–



Accessories for:
SPONGE FLOAT (p. 8)
DRY (p. 36)
WET (p. 38)
NAUTILO (p. 40)

ROKAMAT
SKATE

Concrete and screed Power Trowel

NO. 93000



► Levelling and troweling fresh concrete and screed

► Smoothing concrete elements



Levelling fresh concrete



Spine friendly working

Advantages

- Perfect compact finish
- Easy handling
- Quick and efficient working
- Perfect flatness on small and large areas

Accessories

Base plate with velcro	Unit	No.	Fig.
for all accessory discs Ø 350 mm (No. 48100 - 48900)	1	48000	1
Trowels	Unit	No.	Fig.
Trowel with velcro, perforated	1	48100	2
· Pre-Troweling - levelling unevenness and holes			
Trowel with velcro, smooth Ø 350 mm	1	48200	3
· Trowel finishing on fresh concrete and screed areas			
Trowel (stainless steel) with velcro, smooth "longlife" Ø 350 mm	1	48900	4
Trowel (stainless steel) with velcro, smooth "longlife" Ø 215 mm	1	34900	4
Base plate (to use with trowel N° 34900)	1	69110	—
· Smoothing concrete elements and trowel finishing on fresh concrete and screed areas			
Optional accessory	Unit	No.	Fig.
Shoulder strap	1	05100	5



Technical Data

Tool r.p.m.	85 – 340
Power consumption	1.000 W
Weight	Tool approx. 3,7 kg

Scope of supply



Video



ROKAMAT Wireless Concrete Vibrator

NEW



► For compacting concrete



Light weight and effective

Advantages

- Light weight and handy
- Flexible drive shafts available in different lengths
- Effective compacting radius due to high centrifugal forces
- Robust covering
- High quality material

Models

Wireless Version NEW!		Unit	No.
Wireless Version with 1,3 m flexible drive shaft		1	91400
Wireless Version with 2,0 m flexible drive shaft		1	91500
Wireless Version with 3,0 m flexible drive shaft		1	91600
Electric Version		Unit	No.
Version 1,3 m flexible drive shaft		1	91100
Version 2,0 m flexible drive shaft		1	91200
Version 3,0 m flexible drive shaft		1	91300

Scope of supply

Vibrator Ø 43 mm with flexible drive shaft 1,3 m and motor, in machine case
Wireless version:
add. 1 battery pack and battery charger

Technical Data

	Electric Version	Wireless Version	
Power consumption	1.000 W	18 V / 5,2 Ah	
Deflection	approx. 4 mm	approx. 3 – 4 mm	Diameter vibrator 43 mm
Effective diameter	800 mm	400 mm	Length vibrator 280 mm



Contact

ROKAMAT



sales@betontools.com.au
www.betontools.com.au